

In Memoriam

1906-1973

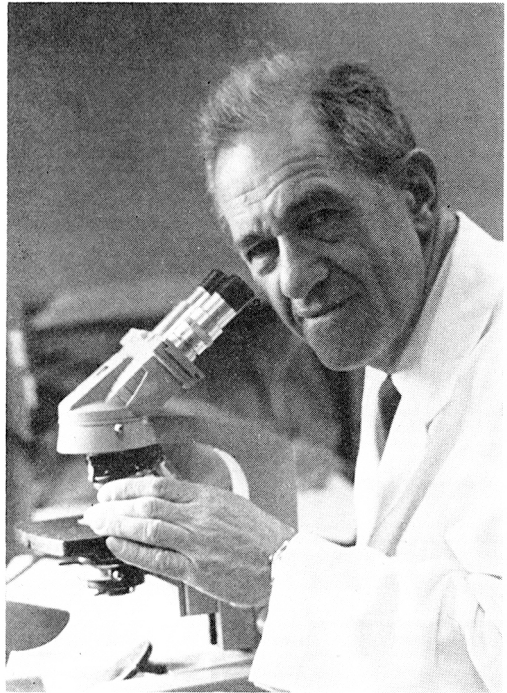
Dr. Abraham J. Gitlitz died as a tragic consequence of a motorbike accident on May 9, 1973 during the field trip to the Bermuda Biological Station sponsored by the Association. Dr. Gitlitz was a member of the Association of Chemical Scientists since 1960 and participated in virtually all of the applied seminars and meetings since his affiliation.* F.W.S.

Abraham J. Gitlitz was a brilliant, energetic pathologist who was dedicated to his work as Director of Laboratories at Christ Hospital, Jersey City, New Jersey. His average work day started at 7 A.M. and usually ended at 10 P.M. He was held in the highest esteem by his colleagues.

Dr. Gitlitz was graduated from the College of Physicians and Surgeons at Columbia University in 1930. He served as resident in obstetrics in New York Lying-in Hospital, a resident in surgery and a resident in pathology at Mt. Sinai Hospital in New York. He did postgraduate work in cytology at Hahnemann Medical College.

Dr. Gitlitz became affiliated with Christ Hospital in 1936 as Director of Laboratories. In addition to his regular duties at the hospital, he served as president of the medical staff and chairman of the hospital executive committee. It is said that he contributed more to the growth and progress of Christ Hospital than any other individual during the past 35 years.

In addition to the Association of Clinical Scientists, Dr. Gitlitz was a member of a number of scientific societies. He was a Diplomate of the American Board of Pathologists, a member of the American Society of Clinical Pathologists, a Fellow of the New York Academy of Medicine and a member of the New York Academy of Science and the International Academy of Pathology.



Dr. Gitlitz has written numerous articles dealing with studies in clinical pathology. He was a visiting associate professor of pathology at New Jersey College of Medicine and Dentistry.

Albert Ehrlich, M.D.

* A number of members of the Association have made contributions in order to establish the Abraham J. Gitlitz Memorial Fund. If you wish to contribute to this fund, it is requested that remittances be sent to the Secretary-Treasurer of the Association of Clinical Scientists.